

Bestemmingswijziging met HSB

Jan Lootens – Koen Vercaempt

22 april 2016

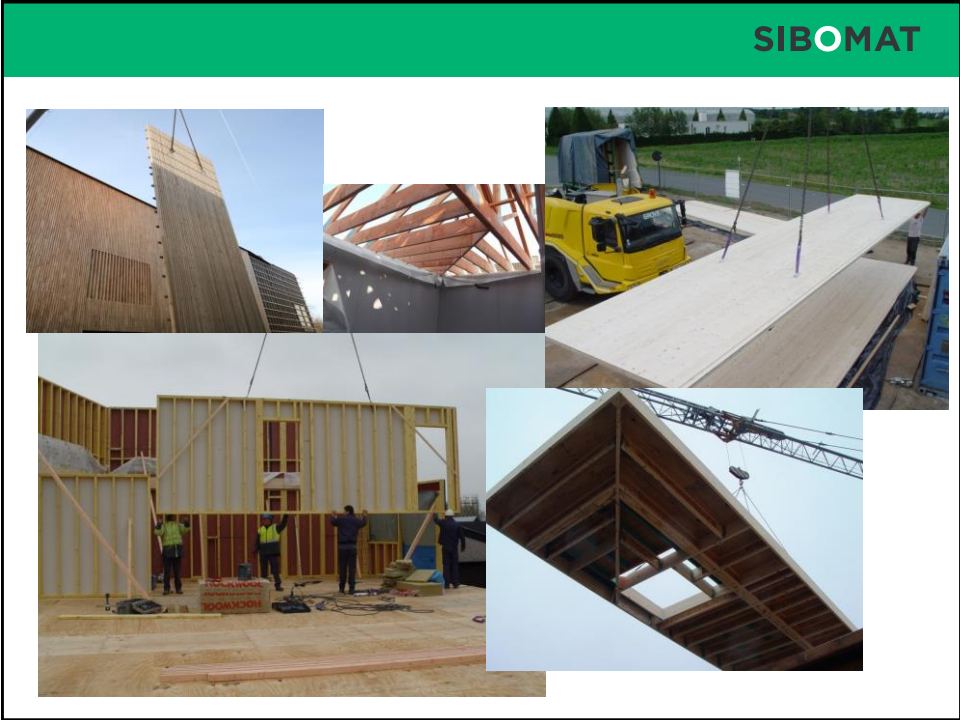


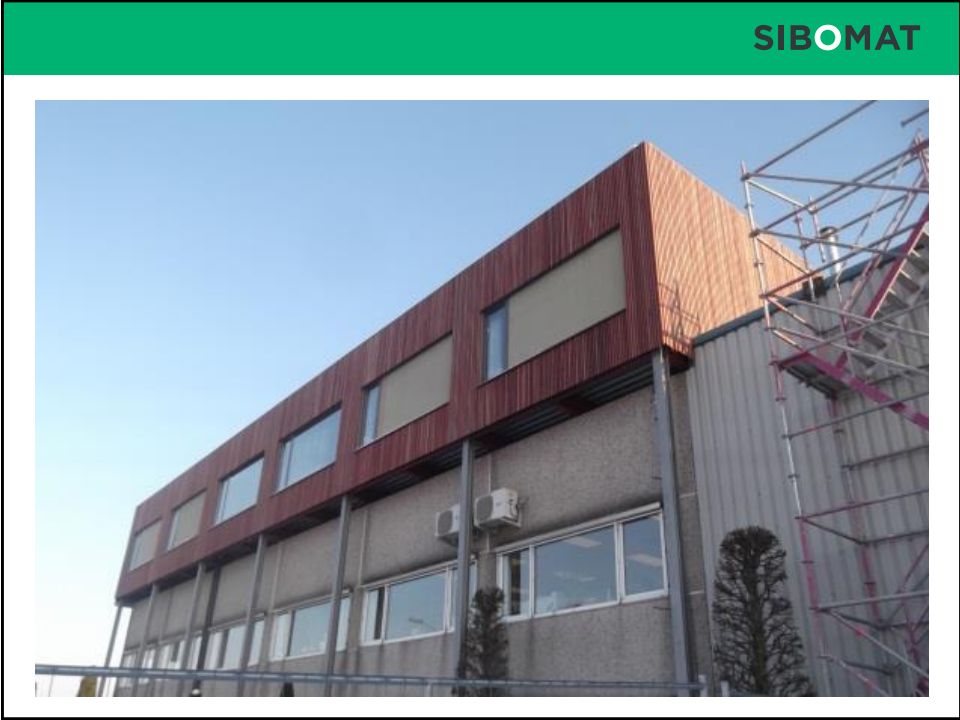
SIBOMAT



SIBOMAT







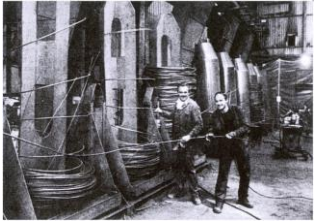
SIBOMAT



SIBOMAT



SIBOMAT



Architecten: Architectenbureau HUB

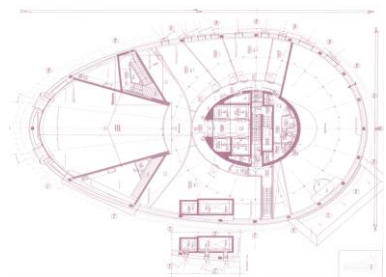
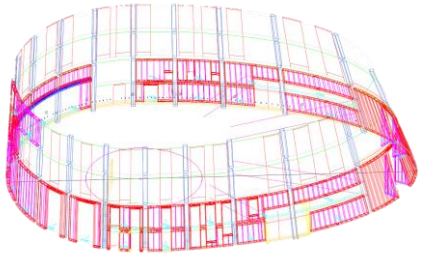
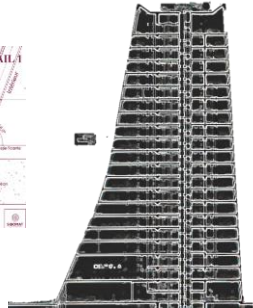
SIBOMAT



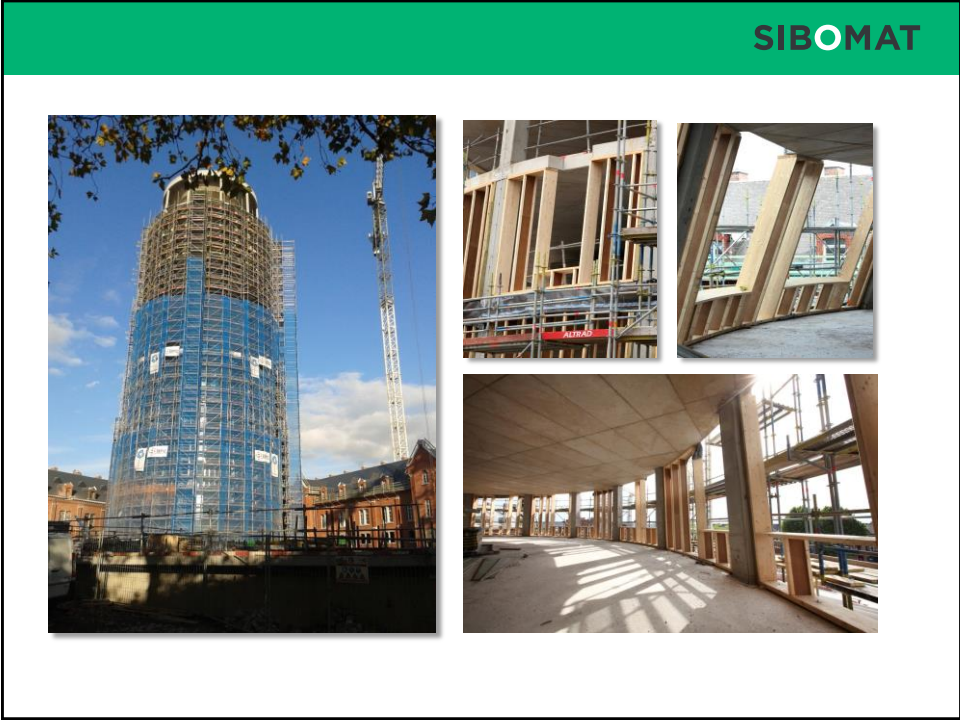
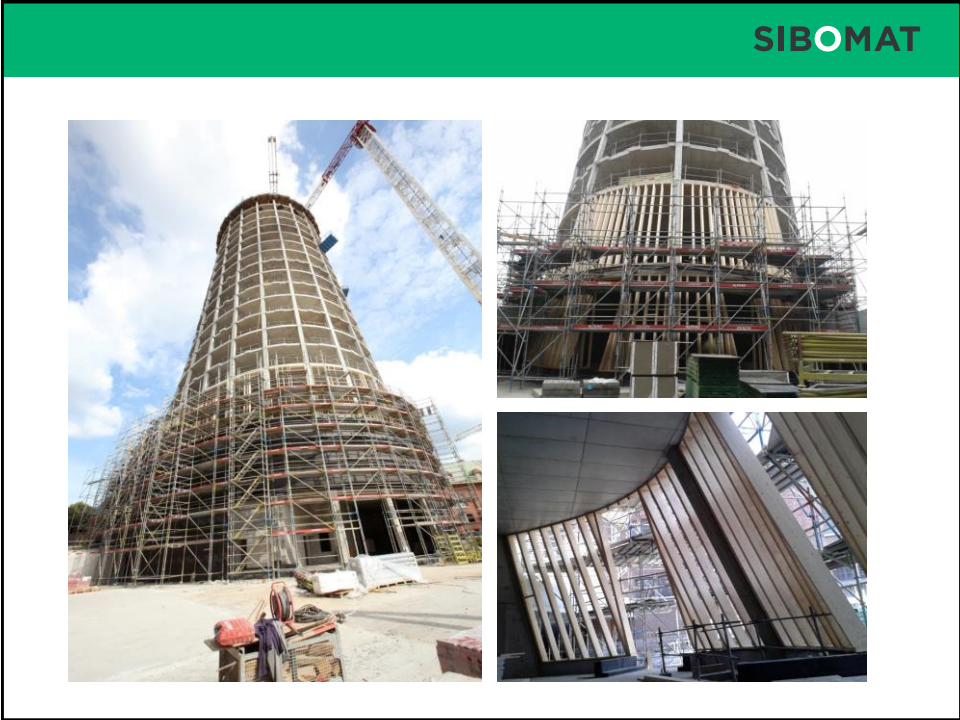
SIBOMAT



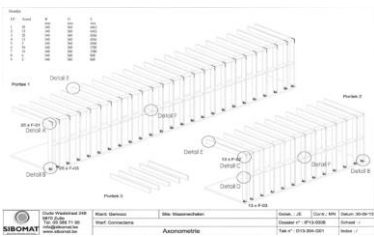
SIBOMAT



Architecten: Ateliers Jean Nouvel / MDW (Yvan Breithof)

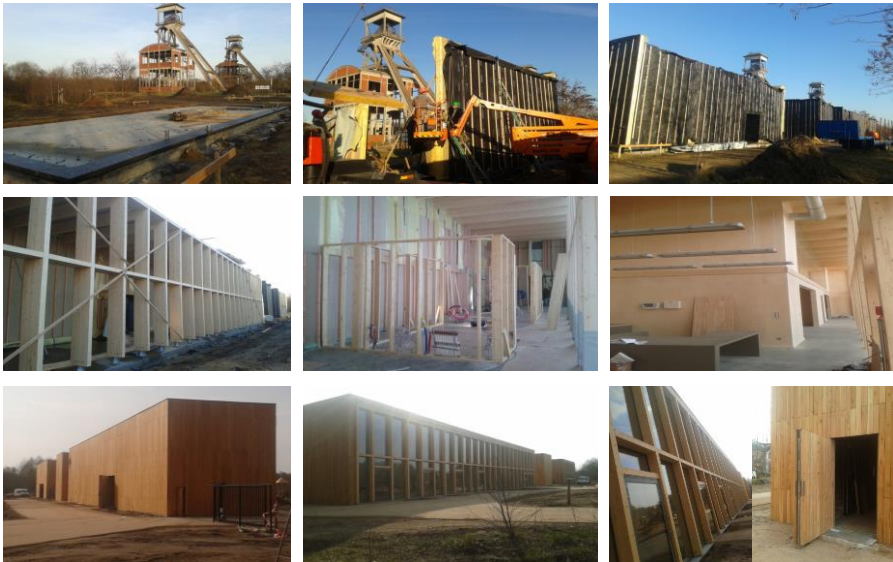


SIBOMAT

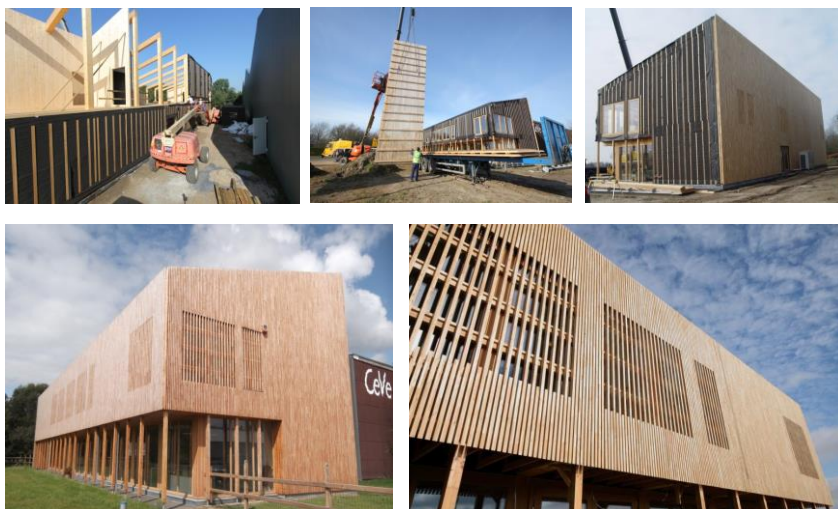


Architekten: De Gregorio & Partners

SIBOMAT



SIBOMAT



Architecten: Wielfaert Architecten

Leopoldtoren

SIBOMAT

Reconversie bestaand kantoorgebouw
Leopoldtoren in Evere tot een moderne
woontoren met appartementen tussen de
35 en 130 m² groot door Matexi.

Aanbod van duurzame en betaalbare
woning in het Brusselse gewest verruimen



Architecten: Architectesassoc.

Leopoldtoren

SIBOMAT

201 appartementen

- 58 studios
- 30 1-kamer
- 71 2-kamer
- 42 3-kamer

300 parkings

220 fietsenstallingen

206 privé kelders

750 m² commerciële ruimte

Leopoldtoren

SIBOMAT

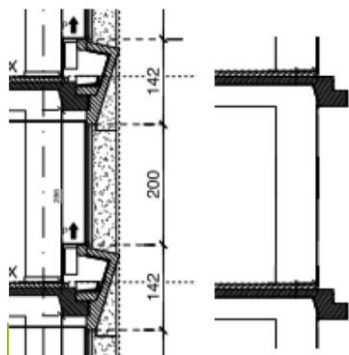


Zonnepanelen = zonneluifel,
berekend op verbruik gemene delen

Leopoldtoren

SIBOMAT

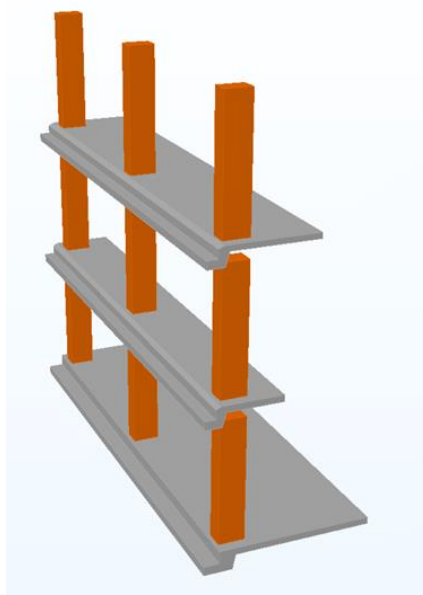
Afbraak met behoud van betonnen tand



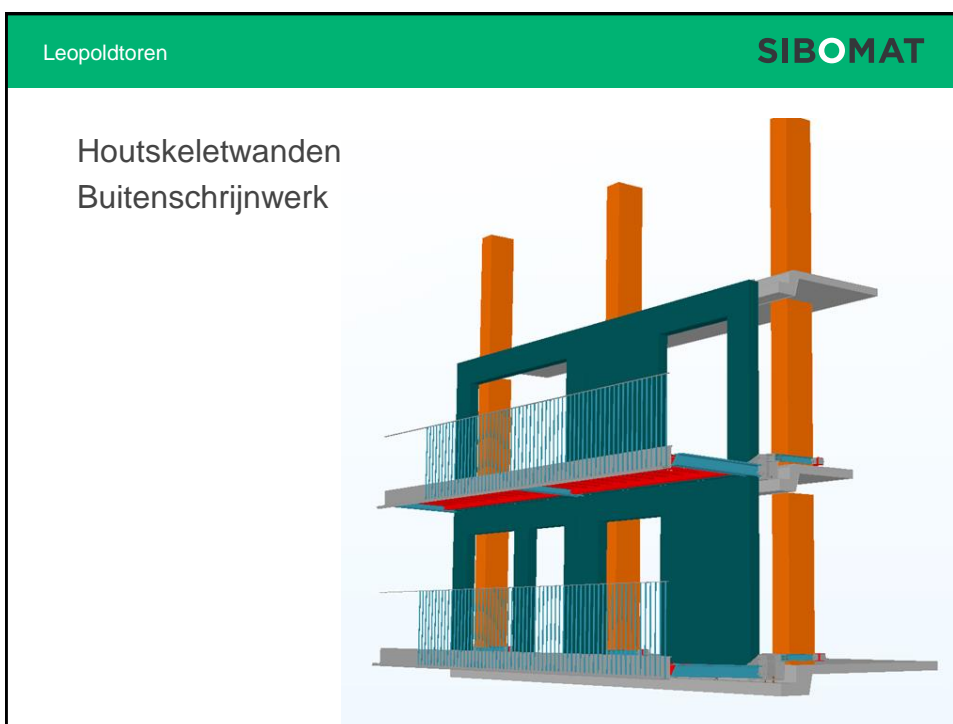
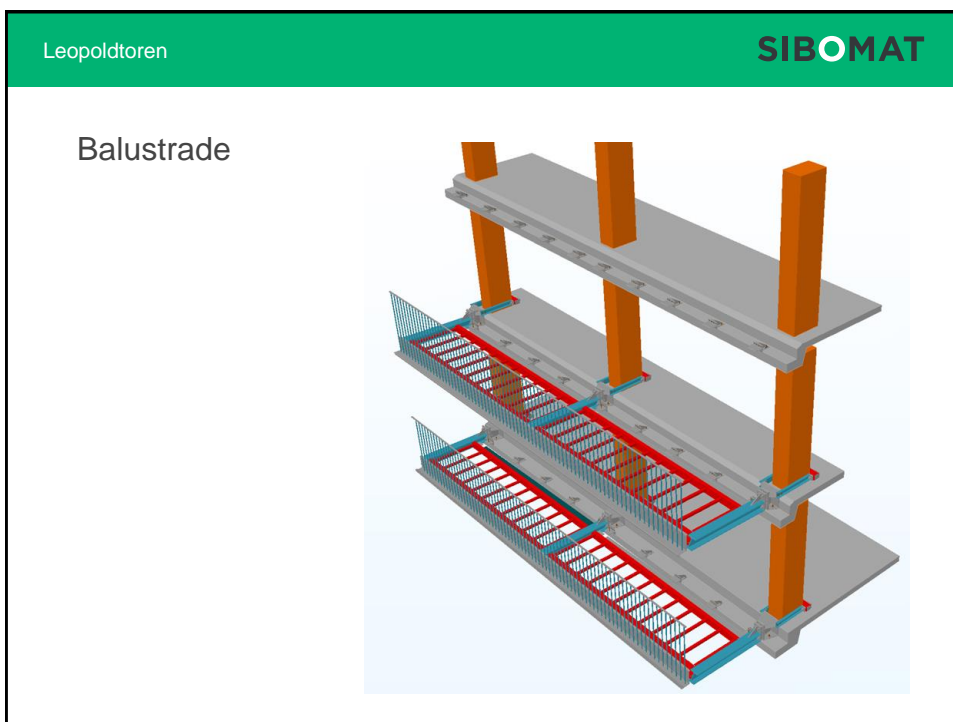
Leopoldtoren

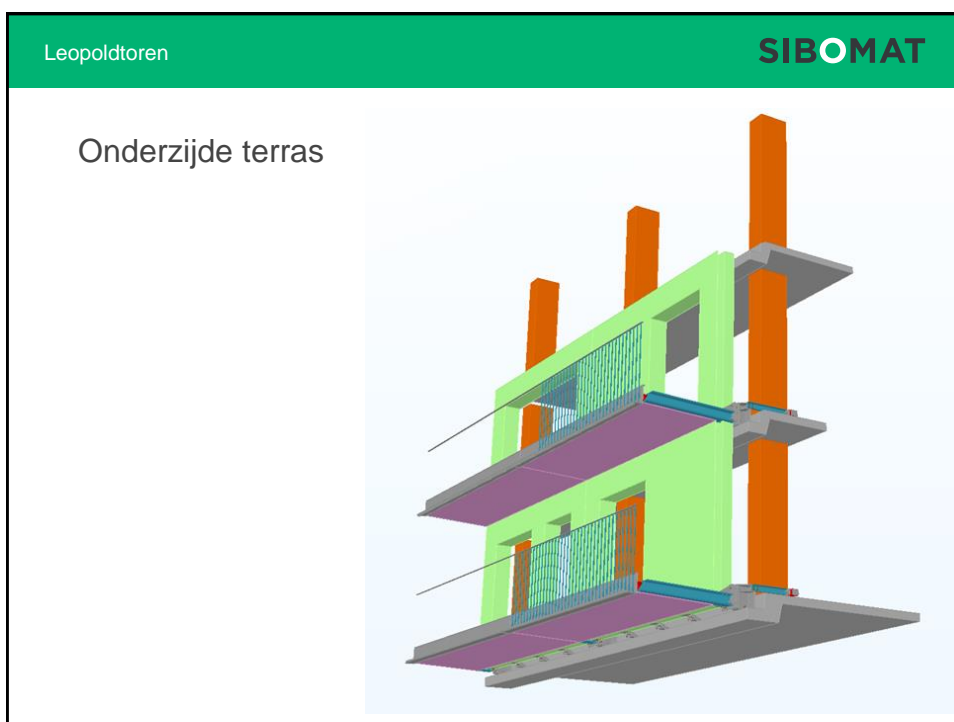
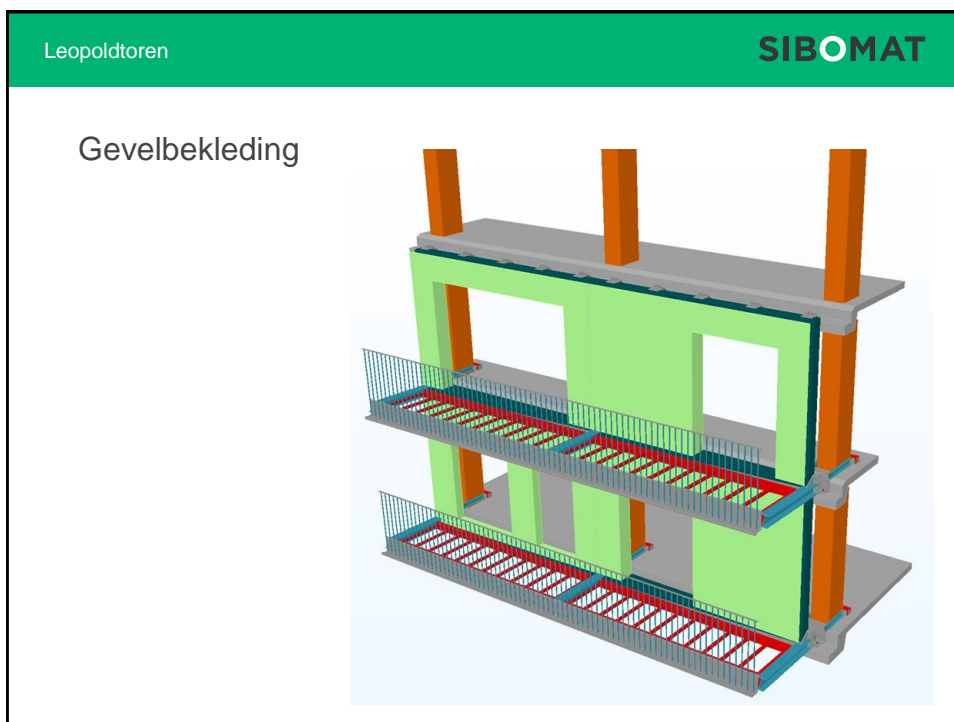
SIBOMAT

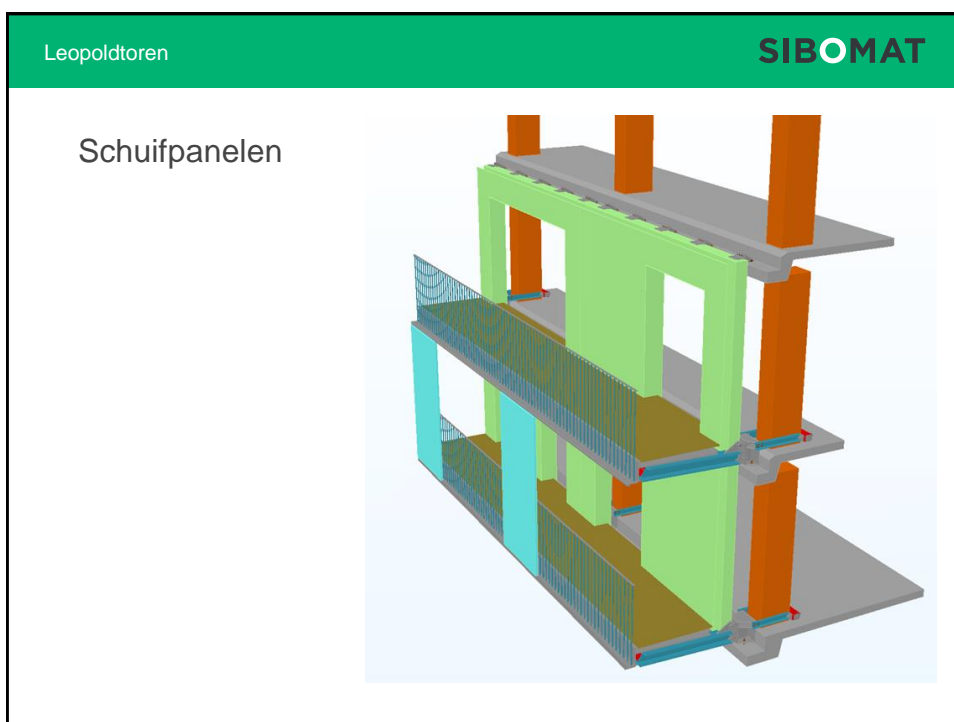
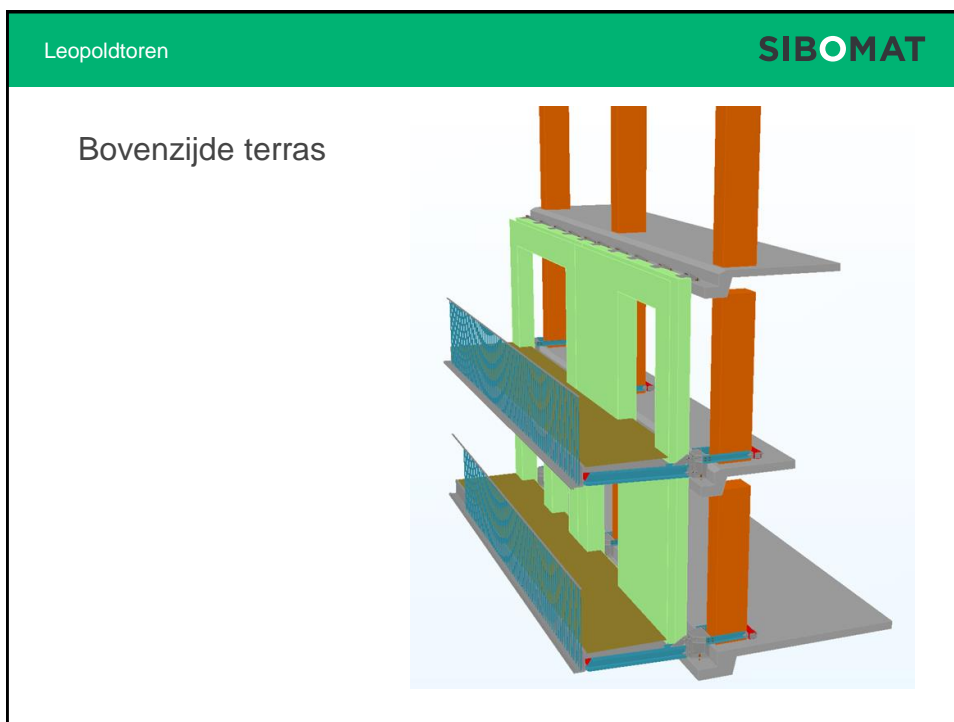
Bestaande toestand





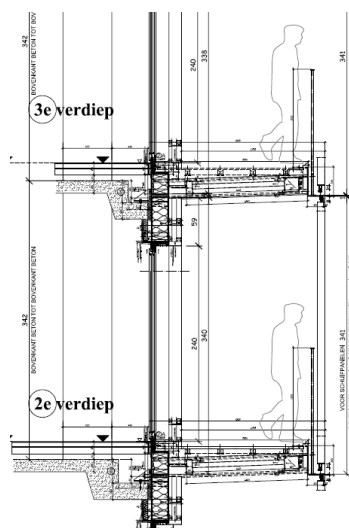






Leopoldtoren

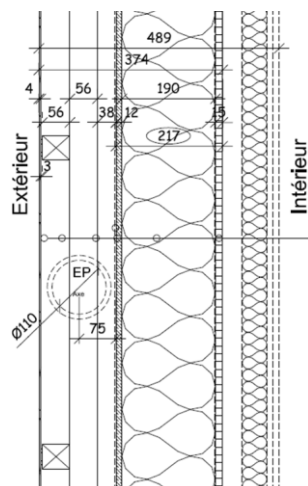
SIBOMAT



Leopoldtoren

SIBOMAT

Houtskeletwand



- Aluminium gevelbekleding
- Latwerk met ingewerkte afvoerbuis
- Spaanplaat B,s,2,d0 en regenscherm
- Skeletstructuur met rotswol 190mm
- Spaanplaat met dampscherm
- Vide
- Metalstud geïsoleerd met 2 gipsplaten

